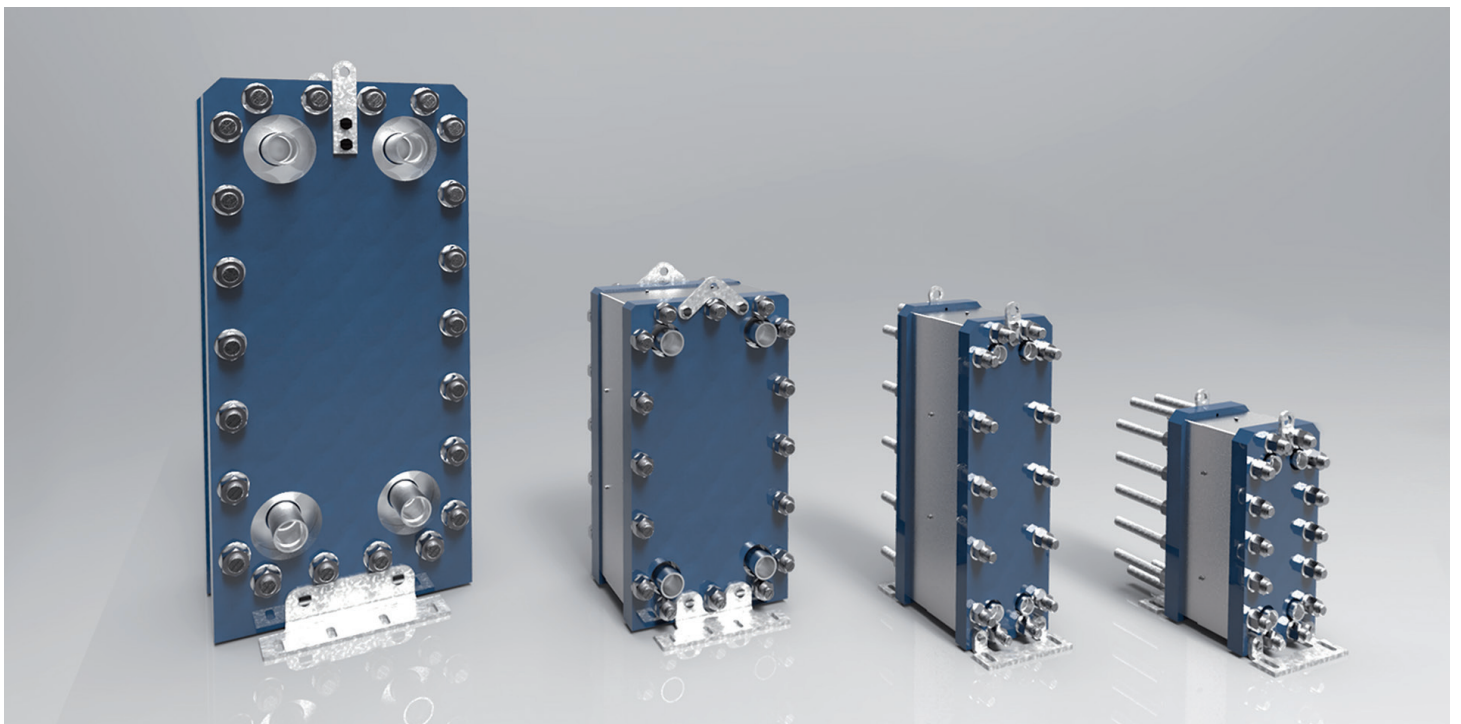




## GBH-HP-Series

# HIGH PRESSURE BRAZED PLATE HEAT EXCHANGERS



### GBH-HP-Series

For the highest mechanical and thermal requirements.

The GBH-HP-Series are brazed plate heat exchangers with a pressure frame. They are designed for transcritical and subcritical CO<sub>2</sub> systems and industrial applications with system pressures up to 140 bar.

### Examples

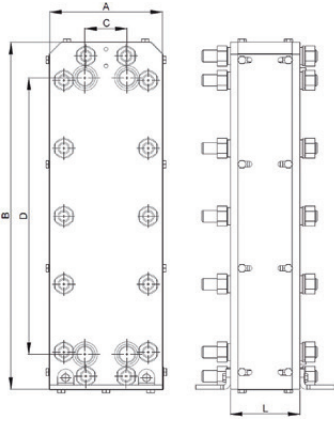
- CO<sub>2</sub> heat pumps
- CO<sub>2</sub> supermarket cooling
- oil cooling
- industrial heating and cooling
- power plant technology

### Always a suitable solution at hand

The brazed plate heat exchangers from Kelvion offer tailor-made solutions for the widest range of application. We configure the most economically favorable model for you from the wide range of available sizes and the numerous optional features. We adapt this with individually positioned connections to meet your specific requirements.

### Your advantages at a glance:

- high permanent pressure resistance
- long lifetime
- low investment costs
- solid frame construction
- CO<sub>2</sub> in a transcritical area



**We need following information to select the optimum heat exchanger**

- required temperature range
- flow rates or required heat load
- maximal permitted pressure drop
- required working conditions

Type	(bar)	Standard dimensions (mm)				(mm)	(kg)	(Litre/Channel)	
Plate heat exchanger	Pressure	A	B	C	D	L-Dimension N = number of plates	Mass N = number of plates	Volume	Max. number of plates
<b>GBH-HP 400H</b>	140/140	195	410	73	281	L=78.5+2.40xN	W=43.0+0.21xN	0.065	100
<b>GBH-HP-DW 400H</b>	120/120	195	410	73	281	L=76.5+2.40xN	W=42.0+0.21xN	0.065	100
<b>GBH-HP 500H</b>	140/140	195	600	73	478	L=72.5+2.28xN	W=78.0+0.21xN	0.100	120
<b>GBH-HP-DW 500H</b>	140/140	195	600	73	478	L=75.0+2.40xN	W=77.8+0.27xN	0.100	100
<b>GBH-HP 700L</b>	140/130	340	621	200	460	L=114.0+2.34xN	W=179.0+0.54xN	0.230	150
<b>GBH-HP 700M</b>	140/130	340	621	200	460	L=114.0+2.35xN	W=179.0+0.54xN	0.230	150
<b>GBH-HP 1000H</b>	130/130	500	1050	237	723	L=163.3+2.31xN	W=652.0+1.25xN	0.600	360
Auch erhältlich mit integriertem Verteilsystem Delta Injection™.									
<b>GBH-HP 500H-AE</b>	140/140	195	600	73	478	L=72.5+2.28xN	W=78.0+0.21xN	0.100	120
<b>GBH-HP 700M-AE</b>	140/130	340	621	200	460	L=114.0+2.35xN	W=179.0+0.54xN	0.230	150
<b>GBH-HP 1000H-AE</b>	130/130	500	1050	237	723	L=163.3+2.31xN	W=652.0+1.25xN	0.600	360

**GBH-HP-Series: Specifications**

- plate material: Stainless steel AISI 316L / 1.4404
- brazing material: Copper

**Features**

- Safety Chamber™ (model 700, 1000)
- Delta Injection™ (model 500, 700M, 1000)
- Full-Flow System™ (model 400, 500)
- Double-Wall-Safety-heat exchanger (type GBH-HP-DW 400 H, GBH-HP-DW 500 H)

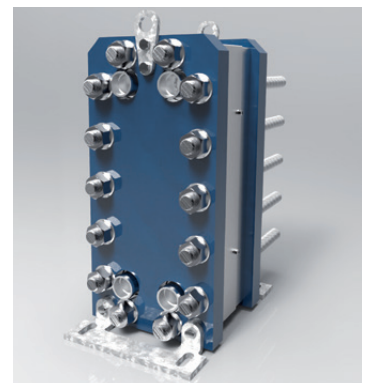
**Performance limits**

- working temperature: -40°C to +150°C
- working pressure: up to 140 bar

**Approval**

- PED (CE)

The specifications contained in this brochure are intended only to serve the non-binding description of our products and services and are not subject to guarantee. Binding specifications, especially pertaining to performance data and suitability for specific operating purposes, are dependent upon the individual circumstances at the operation location and can, therefore, only be made in terms of precise requests.



Kelvion Brazed PHE GmbH  
 Remsaer Straße 2a, 04603 Nobitz-Wilchwitz, Germany  
 Phone +49 34 47 55 39-0  
 Fax +49 34 47 55 39-30  
 sales.nobitz@kelvion.com  
 www.kelvion.com

Kelvion PHE GmbH  
 Karl-Schiller-Straße 1-3, 31157 Sarstedt, Germany  
 Phone +49 50 66 601-0  
 Fax +49 50 66 601-134  
 sarstedt@kelvion.com